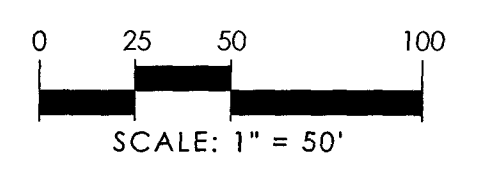
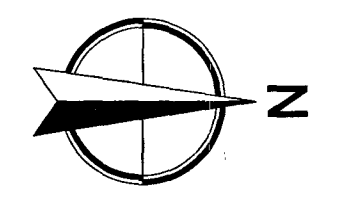


PBA HYDRO STORAGE WATER CONSERVATION & ENERGY CENTER

BEING A PORTION OF SECTIONS 32, TOWNSHIP 43S, RANGE 40E
PALM BEACH COUNTY, FLORIDA

112

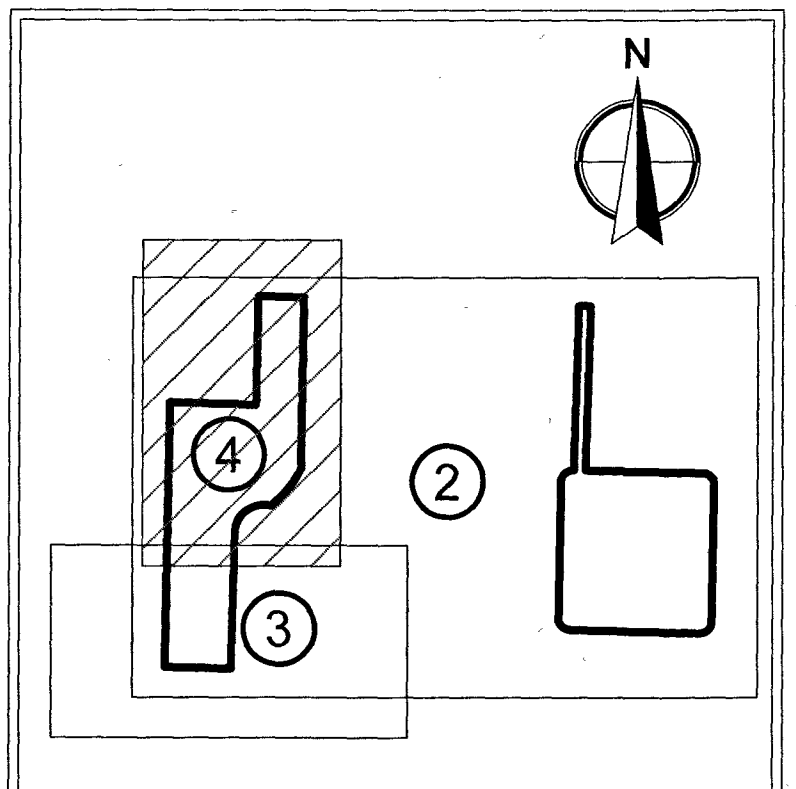
- STATE PLANE COORDINATES:
- A. HORIZONTAL DATUM = NORTH AMERICAN DATUM 1983 (1990 ADJUSTMENT)
 - B. ZONE = FLORIDA EAST
 - C. PROJECTION = TRANSVERSE MERCATOR
 - D. COORDINATES = GRID
 - E. LINEAR UNITS = US SURVEY FEET
 - F. ALL DISTANCES ARE GROUND UNLESS OTHERWISE SHOWN
 - G. SCALE FACTOR = 0.99998948
 - H. GRID DISTANCE = GROUND DISTANCE X SCALE FACTOR
 - I. ROTATION EQUATION: NONE



31
32
29
30
GRID GROUND 1945.85' 1945.87'
GRID GROUND 588'20'19"E 5301.71'
GRID GROUND 5301.65'

NORTHWEST CORNER SECTION 32-43-40
FND. PALM BEACH COUNTY BRASS DISC IN CONC. MONUMENT
CCR 53927
N 858878.462
E 858835.340
PALM BEACH COUNTY POSITION

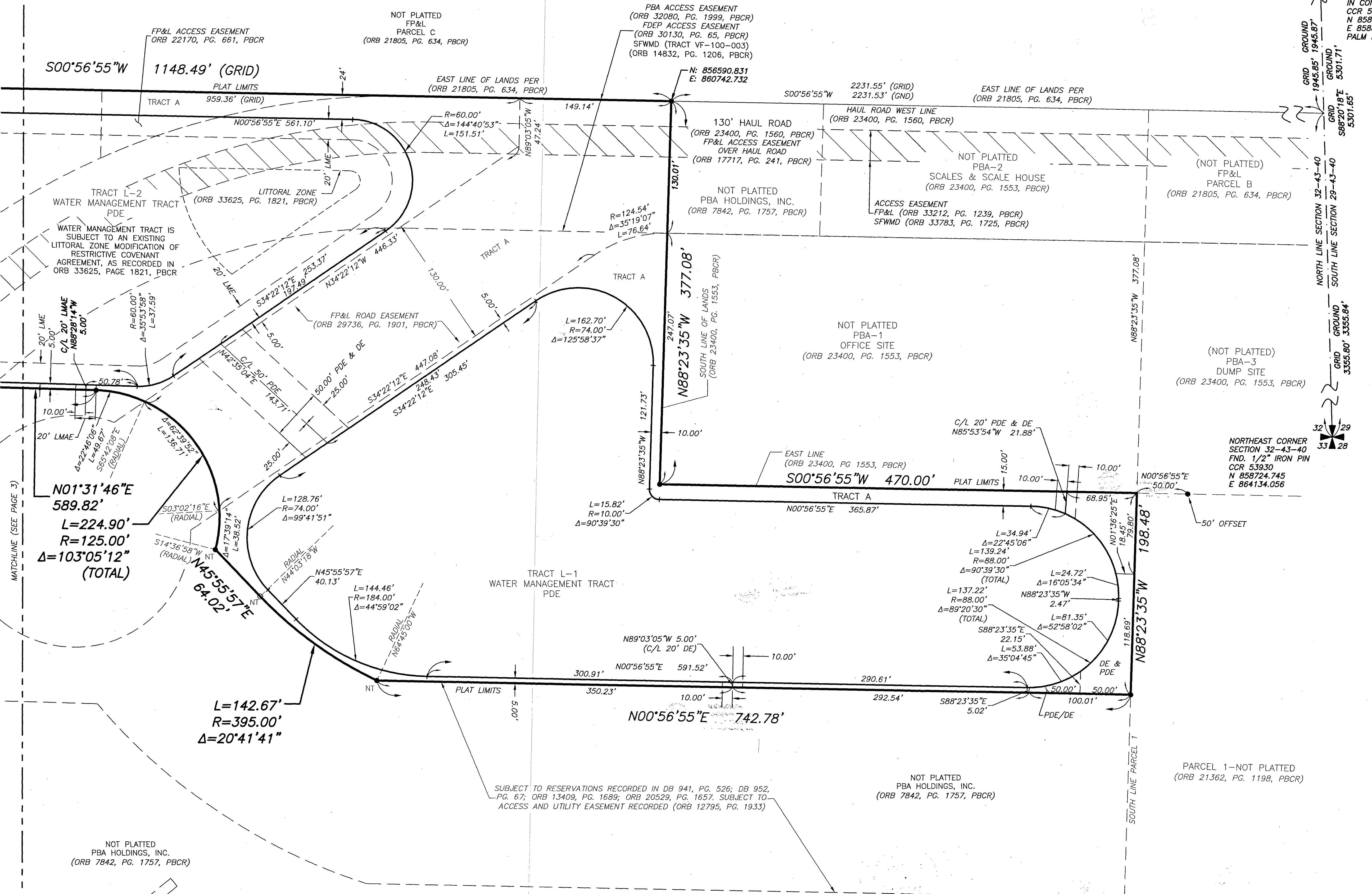
SHEET MAP



NOT TO SCALE

LEGEND:

- CB = CHORD BEARING
- CD = CHORD DISTANCE
- C/L = CENTER LINE
- CCR = CERTIFIED CORNER RECORD
- CONC. = CONCRETE
- Δ = DELTA (CENTRAL ANGLE)
- DB = DEED BOOK
- DE = DRAINAGE EASEMENT
- E = EASTING
- FND. = FOUND
- FDOT = FLORIDA DEPARTMENT OF TRANSPORTATION
- FP&L = FLORIDA POWER & LIGHT
- GND = GROUND
- L = LENGTH OF ARC
- LMAE = LAKE MAINTENANCE ACCESS EASEMENT
- LME = LAKE MAINTENANCE EASEMENT
- LB = LICENSED BUSINESS
- N = NORTHING
- NT = NON-TANGENT
- ORB = OFFICIAL RECORDS BOOK
- PBA = PALM BEACH AGGREGATES, LLC
- PDE = PUBLIC DRAINAGE EASEMENT
- PG. = PAGE
- PC = POINT OF CURVATURE
- PBCR = PALM BEACH COUNTY RECORDS
- POB = POINT OF BEGINNING
- POC = POINT OF COMMENCEMENT
- PB = PLAT BOOK
- PRM = PERMANENT REFERENCE MONUMENT
- R = RADIUS
- R/W = RIGHT-OF-WAY
- SWMMD = SOUTH FLORIDA WATER MANAGEMENT DISTRICT
- UE = UTILITY EASEMENT
- = SET 5/8" IRON ROD & ALUMINUM CAP STAMPED "LB 7055 PRM"



MATCHLINE (SEE PAGE 3)

SOUTH LINE PARCEL T

NOT PLATTED
PBA HOLDINGS, INC.
(ORB 7842, PG. 1757, PBCR)

SUBJECT TO RESERVATIONS RECORDED IN DB 941, PG. 526; DB 952,
PG. 67; ORB 13409, PG. 1689; ORB 20529, PG. 1657. SUBJECT TO
ACCESS AND UTILITY EASEMENT RECORDED (ORB 12795, PG. 1933)

NOT PLATTED
PBA HOLDINGS, INC.
(ORB 7842, PG. 1757, PBCR)

PARCEL 1-NOT PLATTED
(ORB 21362, PG. 1198, PBCR)

SHEET 4 OF 4

THIS INSTRUMENT WAS
PREPARED BY JIM SULLIVAN



2035 Vista Parkway, West Palm Beach, FL 33411
Phone No. 866.909.2220 www.wginc.com
Cert No. 6091 - LB No. 7055